

MONUMENT RECORD

Corner I.D. #

A-13

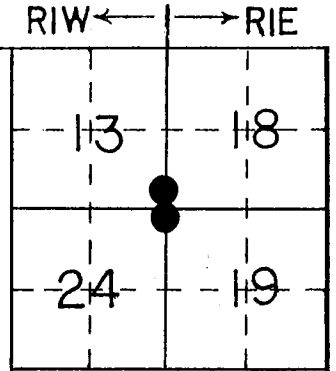
STATE OF INDIANA - COUNTY OF MONROE

Section 13 & 24 18 & 19, Township 8 North 8 North, Range 1 West 1 East

Monument Description & Remarks: Two stones found as described in drawing
and field notes (attached). North stone is 13.29', N 02° E, of south stone.
South stone marked w/"X"

Recovery Tie Drawing

SEE ATTACHED DRAWING & FIELD NOTES



● At Corner

N

Not To Scale

State of Indiana
County of Monroe

Space
Reserved For
Recording
Officer

I, Michael W. Friley, County Surveyor, hereby certify
that this document was prepared under my direction in
accordance with the provisions of Section 17-3-64-4
through 17-3-64-8 of the Indiana Code, being Acts of 1965,
Chapter 319; and the above data is given under my hand and
seal this 6th day of May, 1996 A.D.

Indiana Registered Land Surveyor No. _____ or

Monroe County Surveyor's Office
United States Government Agency

Monroe County Surveyor
Title

Field Book:

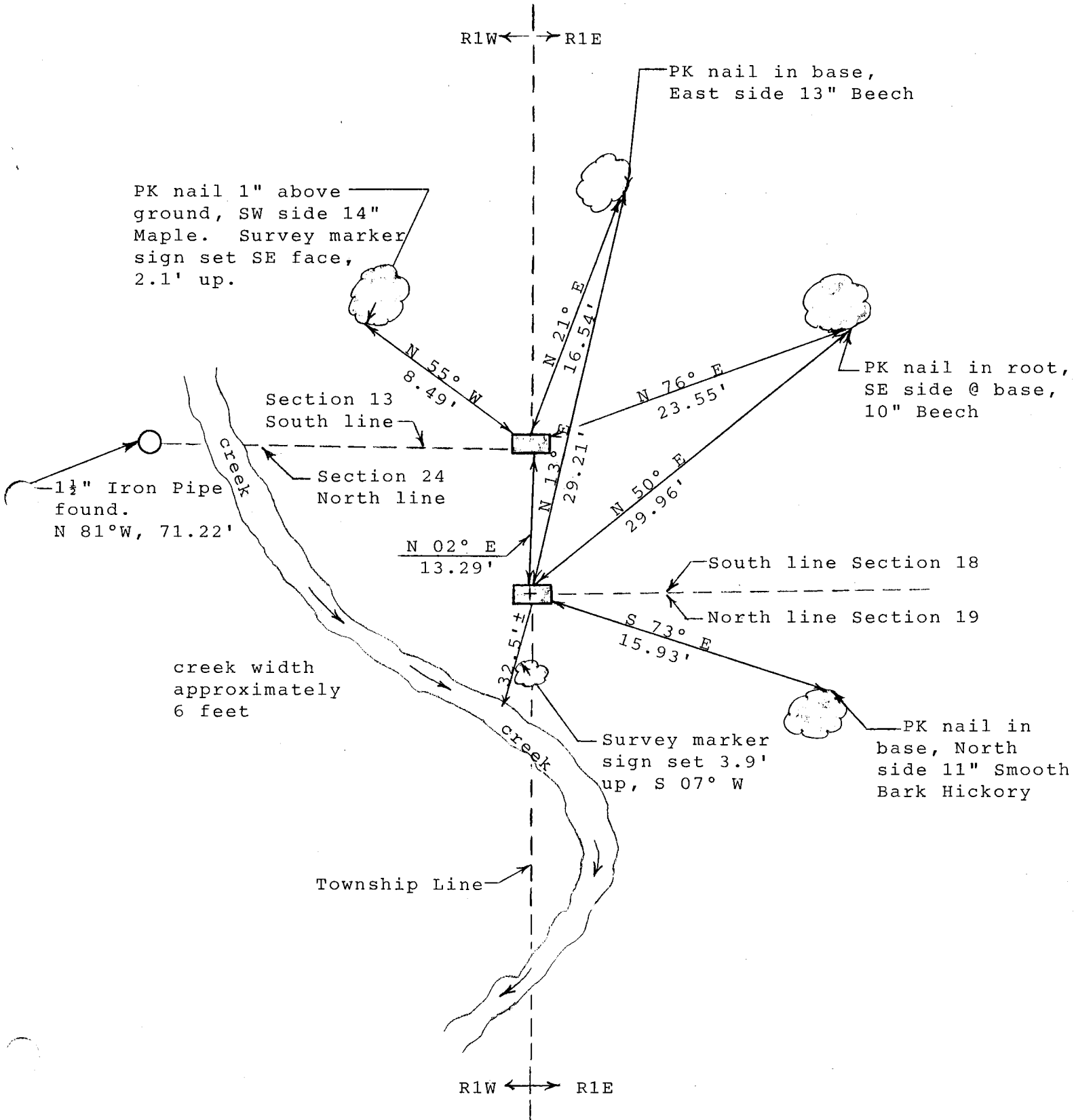
96-01

Page:

50 - 52

RECOVERY TIE DRAWING

SECTIONS 13 & 24, T8N, R1W and SECTIONS 18 & 19, T8N, R1E.



Note: See attached field notes for more information.

(57)

5-6-96

SEE PAGE 50 THIS BOOK

FND 2 SANDSTONE STONES
ON THE RANGE LINE OF 1 EAST
AND 1 WEST. BOTH STONES FIRM
IN GRND. NO "X" ON THE NORTH
STONE VERY GOOD, WELL DEFINED "X"
ON THE SOUTH STONE. DUG DOWN
AROUND ALL SIDES OF BOTH STONES.
NOTHING ON THE NORTH STONE -
FND DEFINITE "X" CHISEL ON THE SOUTH
SIDE OF THE SOUTH STONE "X" WAS
LONGER TO THE EAST.



FND. "I" PIPE
TO THE WEST OF THE NORTH
STONE. FRESH DOWN MAPLE 3" NORTH
OF PIPE TO ENCLING TO E. & W.
BOTH STONES HAD OLD FLAGGING
TIED TO THEM. ALSO FND.
TRACES OF OLD DOWN BARBED
WIRE TO THE EAST. THAT
LINES UP ROUGHLY TO THE SOUTH
BETWEEN BOTH STONES. ALLEGED
NORTH STONE TO BE CORNER OF
SEC. 13 & 24, T1N, R1W & SOUTH
STONE TO BE CORNER OF SEC. 18, T1N,
R1E. *MOW 1*

5-6-96

SEE PG. 50 THIS BOOK

(58)

NOTE: PLACED CHAIN OF ROCKS
AROUND BOTH STONES.

THE NORTH STONE END IS
0.2' X 0.9' X 0.5' OUT OF
GRND. NO "X".

SEARCHED FAINT "X" FOR MEAS. PURPOSES

THE SOUTH STONE END IS
0.4' X 0.8' X 0.6' OUT OF
GRND. ON SOUTH SIDE & FLUSH
GRND ON N. SIDE.

CONCLUSION: THE SOUTH STONE IS
OF A MORE SUBSTANTIAL MATERIAL
ALTHOUGH BOTH STONES ARE SANDSTONE.
THE "X" CHISEL ON THE SOUTH
SIDE OF SOUTH STONE AND BEING
LONGER TO THE EAST (CONFIRMED TO
ME THAT THIS WAS CORNER FOR
SECTIONS TO THE EAST. THE
"I" PIPE & PAVIN TREE TO ENCLING
TO W THE WEST OF NORTH STONE
EVIDENCED THE NORTH TO BE COR.
FOR SECTIONS TO WEST. I
SUSPECT THIS NORTH STONE
WAS SET BY A DIFFERENT
SURVEYOR THAN THE SOUTH
STONE. REC. DIST = 13.20'
MEAS. DIST = 13.29'